

# Otis Rupture Valve

The Rupture Valve is designed to protect against an elevator traveling over standard speed in the down direction due to a supply line failure or car overload situations.

## Enhanced safety

The Rupture Valve, also referred to as an “Overspeed valve” or “Safety Shut Off Valve,” provides protection for passengers in the event the elevator car overspeeds in the down direction due to a supply line failure or a car overload situation.

The valve is mounted next to the cylinder and monitors the flow of oil between the rupture valve and the power unit. The valve is adjusted to stop the elevator in the event of a failure.

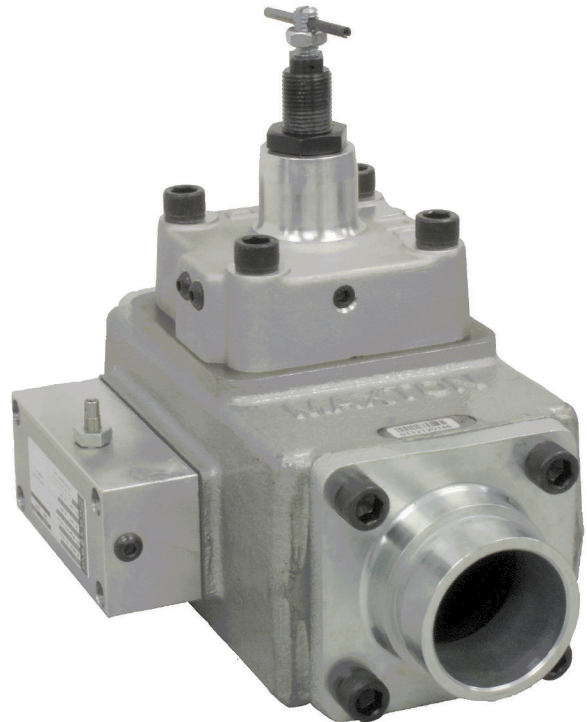
## Code compliant

The Rupture Valve operates in compliance with AMSE A17.1 (2007), safety code for elevators, and meets UFGS Division 14 Conveying Equipment Section 14 24 00 Part 2.4.2.2 requiring a valve equipped with manufacturer’s manual shutoff feature.

The use of this valve is required in areas of high level seismic activity, including California. Check your local codes for compliance.

## Environmentally sensible

The Rupture Valve restricts the flow of oil from the cylinder through the supply line failure location. This helps to limit the amount of oil that will need to be cleaned up and disposed of in case of failure.



 **SAFE**

 **RELIABLE**

 **PEACE OF MIND**

## Features & Benefits

- A manual shut-off for use as a pit shut-off valve
- No electricity required
- Adjustable closing rate
- 24-month limited warranty